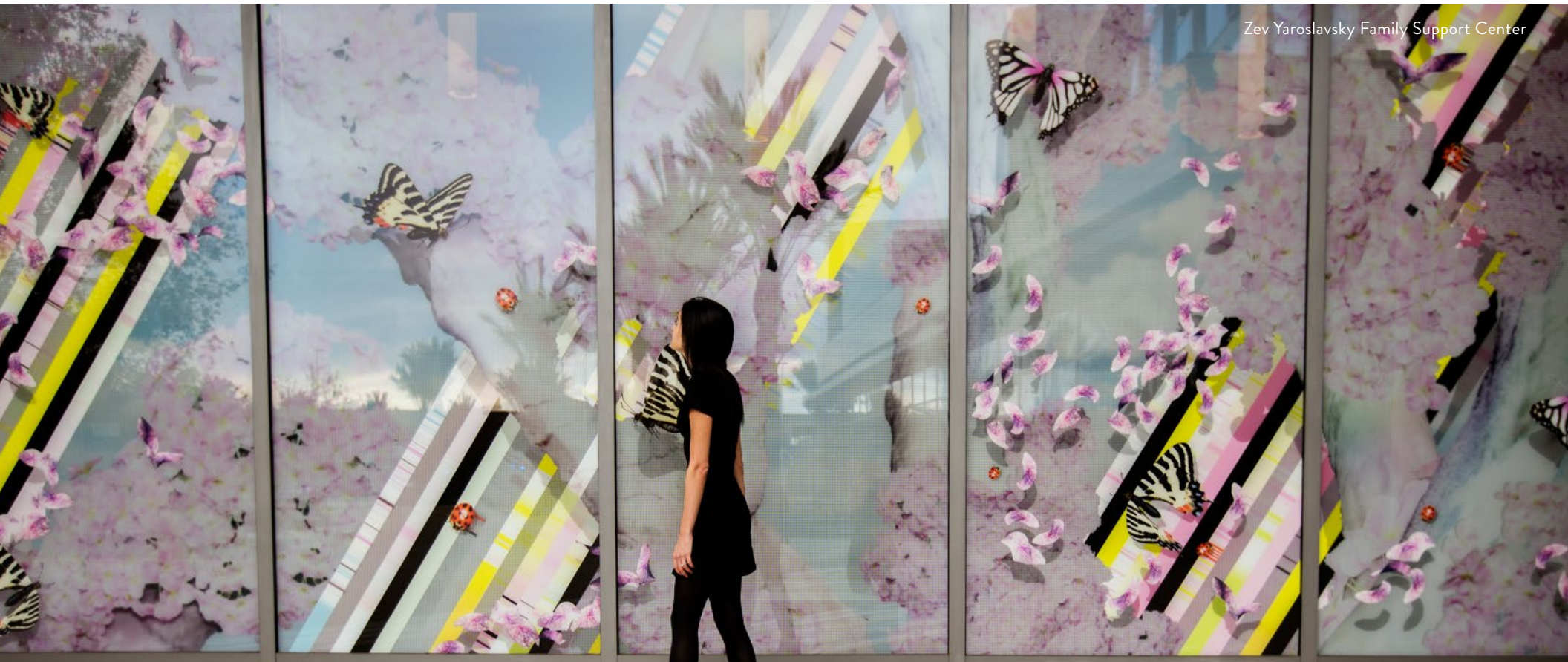


ANNUAL REPORT CIVIC ART PROGRAM

Zev Yaroslavsky Family Support Center



Los Angeles
County
Arts
Commission

2015-16



TABLE OF CONTENTS

Civic Art Program	3
Year in Review Highlights.....	5
Creative Placemaking	6
Antelope Valley Art Outpost	8
Cross-Sector Collaboration	10
Roadmap to a Sustainable Waste Management Future.....	11
Interdepartmental Healthy Design Workgroup.....	12
Capital Projects	14
Hall of Justice.....	15
Zev Yaroslavsky Family Support Center.....	17
County Collection	23
Conservation	25
Acquisitions and Donations	28
Civic Art Inventory	30
Index – Civic Art Projects Listed by District	35

CIVIC ART PROGRAM OVERVIEW

Extraordinary Experiences in Everyday Places

The Los Angeles County Arts Commission Civic Art Program works with emerging and leading civic artists, County departments and communities to create artwork, exhibitions, temporary art and event-based programming for new and renovated facilities throughout Los Angeles County.



Zev Yaroslavsky Family Support Center

44 PROJECTS WERE ACTIVELY MANAGED

15 NEW CIVIC ART PROJECTS WERE INITIATED

12 CIVIC ART PROJECTS WERE COMPLETED

CIVIC ART PROGRAM ACTIVITY COVERED **57** COMMUNITIES

OVER **4000** COMMUNITY MEMBERS WERE REACHED THROUGHOUT THE COUNTY

105 CIVIC ART PROJECTS HAVE BEEN COMPLETED SINCE 2004

The Civic Art Program was established in 2004 after the Los Angeles County Board of Supervisors adopted the County’s first Civic Art Policy, which allocates one percent of design and construction costs of new County capital projects to a Civic Art Special Fund. The program provides leadership in the development of high-quality civic spaces by integrating artists into the planning and design process at the earliest possible opportunity, encouraging innovative approaches to civic art, and providing access to artistic experiences of the highest caliber for the residents of Los Angeles County.

Los Angeles County artists are creative strategists who provide alternative perspectives in formulating solutions, conveying messages and contributing to the built environment.

The Civic Art Program is committed to connecting these artists to a growing range of civic art opportunities in Los Angeles County. From creative placemaking to

environmental stewardship and community planning, the program has shepherded projects that include support for regional vitality through artist-driven projects in unincorporated communities of the County, interdepartmental and cross-sector County workgroups to identify ways in which Los Angeles County’s abundant creative sector can serve County objectives, and master planning for significant County assets throughout the region.

Civic Art staff members also provide leadership in the field through speaking engagements, conference presentations, and representation on three national arts bodies: the Americans for the Arts Public Art Network Council, the Western Museums Association/Collections and the Registrars Committee Western Region.

YEAR IN REVIEW HIGHLIGHTS

August 2015

The Board of Supervisors updated the Civic Art Policy to include eligibility of County capital projects that are delivered by private developers.

November 2015

Golden State Mutual collection purchase approved by the State of California.

May 2016

The Arts Commission was awarded a National Endowment for the Arts Art Works grant for a project titled Camp Ground: Arts, Corrections and Fire Management in the Santa Monica Mountains (CAMP).

June 2016

Inverted Landscapes by Elena Manferdini at the Zev Yaroslavsky Family Support Center named one of the best public artworks in the US by Americans for the Arts Public Art Network Year in Review.

Staff was instrumental in securing a signed agreement between the General Services Administration of the federal government and the Los Angeles County Museum of Art (LACMA) granting LACMA stewardship of ten murals of the Works Progress Administration's Federal Art Project that were held in storage since their removal from the former Los Angeles County Hall of Records in 1972.

CIVIC ART PROGRAM'S IMPACT TO THE CREATIVE ECONOMY

94

UNIQUE
VENDORS
EMPLOYED

30
ARTISTS

10 ARTS
ORGANIZATIONS

15 ART
MANAGERS

12 PANELISTS

22 DESIGN &
BUILD CONSULTANTS

5
CONSERVATORS

CREATIVE PLACEMAKING

A photograph showing two people from behind, looking at a wall covered in sticky notes and large letters spelling 'DREAM'. The letters are stylized: 'D' is blue, 'R' is pink with polka dots, 'E' is blue and white striped, 'A' is red and white striped, and 'M' is black with white dots. A person on the right is pointing at a red sticky note. The wall is also covered with many other sticky notes in various colors (blue, pink, green, yellow). A large white sign with the text 'what you gonna do?' is visible in the lower middle part of the wall.

In creative placemaking, public, private, nonprofit and community sectors partner to strategically shape the physical and social character of a place by leveraging creative assets to support community development.



Through a variety of creative placemaking projects that have been implemented over the recent years, the Civic Art program has connected community voices to the development of regional plans. From Project Willowbrook to Some Place Chronicles, Dockweiler Beach mural project to the Creative Graffiti Abatement Program, creative placemaking efforts continue to evolve in LA County as the Civic Art Program finds new ways to utilize cultural assets to address environment and community issues.



Antelope Valley Art Outpost

The Los Angeles County Arts Commission believes that the arts are an important component in community development. The Antelope Valley Art Outpost (Outpost) project supported regional vitality through innovative, artist-driven projects in the unincorporated communities of Littlerock and Sun Village.

The Outpost project was divided into two phases: Phase 1 was the Antelope Valley Cultural and Community Asset Research, and Phase 2, the Artist in Residence Program, which embedded two artists in the communities of Littlerock and Sun Village to create projects with local residents.

To implement Phase 1, Civic Art staff assembled a cross-sector team. The Greater Antelope Valley Economic Alliance, the Lancaster Museum of Art and History (MOAH) and the Otis College of Art and Design's MFA program in Public Practice, with support from the Office of Supervisor Michael Antonovich and the City of Lancaster, worked collaboratively to identify community and cultural assets, needs and opportunity areas over a period of nine months.

Chief among the community and cultural assets that Civic Art staff sought to identify and understand were local artists. Artist Rebecca Niederlander developed an outreach plan based on a chain letter in which a group of artists invited another group, and so on, to produce an art exhibition curated by relationships. Identifying an initial group of artists that had significant ties to the larger creative community was critical to ensuring success. "Artist" was broadly outlined to

include painters, sculptors, photographers, musicians, poets, tattoo artists, doodlers and quilters. If you lived in the Antelope Valley and self-identified or were identified by others as having an artistic practice, you were eligible. The project was called *Regarding Us* to emphasize the distinct nature of this community. In all, 178 artists were identified, with 50 of them included in the show.

Robin Rosenthal, an Antelope Valley artist and documentary filmmaker who participated in the exhibition, was selected to be the artist in residence in Littlerock for Outpost Phase 2. The project was designed to engage residents in discussions about place through documentary filmmaking. It included Film Fridays, a free series of documentary screenings and public discussions and the REAL93543 Film Club, whose members met over six months to build skills and create their own short documentaries. Dozens of community residents also participated by capturing video clips on their mobile devices for a "day in the life" documentary that was edited by Rosenthal. For the culminating event, the documentaries created by residents were screened at the first-ever REAL93543 Film Festival.

Through this process it became clear that artists play an important role in communicating what is extraordinary about place. An artist's ability to organize, to inspire participation, to gather people together and to celebrate has always been a part of the way that communities are defined and built. Evidence of that was demonstrated here, in the now and in preparing for the future of the Antelope Valley.

CREATIVE PLACEMAKING PROJECTS

Projects listed alphabetically



Antelope Valley Art Outpost

Little Rock and Sun Village, Antelope Valley, CA
Fifth District
Budget: \$220,000
Funding Source: National Endowment for the Arts Grant, California Arts Council Grant, Civic Art Funds
Status: Close-out



Creative Graffiti Abatement Program

AC Bilbrew Library, East Rancho Dominguez Community Center, Victoria Park and Woodcrest Library, Los Angeles, CA
Second District
Department of Parks and Recreation
Budget: \$305,000
Funding Source: Open Space District Grant, Civic Art Funds
Status: Fabrication



Camp Ground: Arts, Corrections and Fire Management in the Santa Monica Mountains (CAMP)

Malibu Conservation Camp #13
Third District
Fire Department
Budget: \$40,000
Funding Source: National Endowment for the Arts Grant
Status: Planning



Some Place Chronicles

East Rancho Dominguez, Florence-Firestone, Lennox and Ladera Heights/View Park/Windsor Hills, Los Angeles, CA
Second District
Budget: \$280,000
Funding Source: Utility User Tax
Status: Fabrication

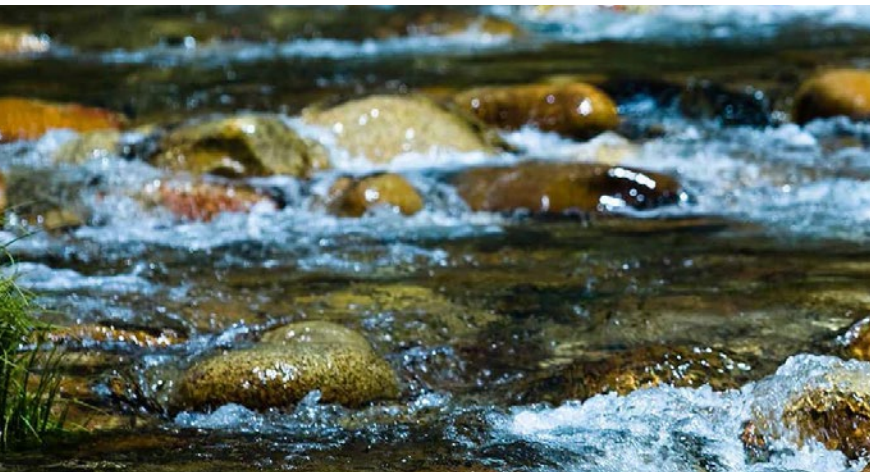


CROSS-SECTOR COLLABORATION

The Civic Art Program is committed to creating meaningful touchstones for the community through relationships with other County departments. The Arts Commission is working toward developing ways to utilize existing County programs, such as its policy driven civic art program, to further train and engage the creative sector as service providers that carry forth messaging, demonstration and change projects.



ROADMAP TO A SUSTAINABLE WASTE MANAGEMENT FUTURE



The Civic Art Program continues to explore how LA County’s abundant creative sector can be leveraged for solutions to intractable social and environmental issues. In October 2014, a value statement about the role the arts can play was incorporated into the Board of Supervisors–approved Roadmap to a Sustainable Waste Management Future, a master plan to divert more than 95 percent of the County’s waste from landfills by 2045. The Arts Commission serves with representatives from over 15 County departments on the interdepartmental workgroup led by Public Works. The interdepartmental collaboration is developing ways to use existing County programs and new grant funds for public outreach and engagement activities and to integrate artists as creative strategists into the implementation of the Roadmap.



INTERDEPARTMENTAL HEALTHY DESIGN WORKGROUP

In 2013, the Arts Commission began serving on the interdepartmental Healthy Design Workgroup (HDW), which is a Public Health initiative mandated by the Board of Supervisors to improve community health and livability in the County. Staff has been working with Public Health, Public Works, Parks and Recreation, Regional Planning and Internal Services to evaluate and prepare collaborative grant opportunities. Civic art projects, such as the Del Aire Fruit Park and the Project Willowbrook creative placemaking project, have been used to support grant applications to demonstrate the County's experience in community engagement, creative solutions and interdepartmental collaboration.

Since 2013, the committee has submitted 23 grants requesting \$37 million dollars for the development and implementation of infrastructure improvements and community plans that encourage outdoor physical activities, such as walking and biking, as well as parks- and transit-oriented developments. Of these, 14 grants have been awarded for \$16.4 million, and approximately \$9 million in grants pending.



INITIATIVES & CROSS-SECTOR COLLABORATION PROJECTS

Projects listed alphabetically



Camp Vernon Kilpatrick Replacement Center

427 S. Encinal Canyon Rd., Malibu, CA 90265

Third District

Department of Probation

Budget: \$340,000

Funding Source: Civic Art Funds

Status: Planning

Interdepartmental Healthy Design Workgroup

Various Locations, Los Angeles, CA

All Districts

Department of Public Health

Budget: \$0

Status: Planning

Roadmap to a Sustainable Waste Management Future

Various Locations, Los Angeles, CA

All Districts

Department of Public Works

Budget: \$0

Status: Scoping



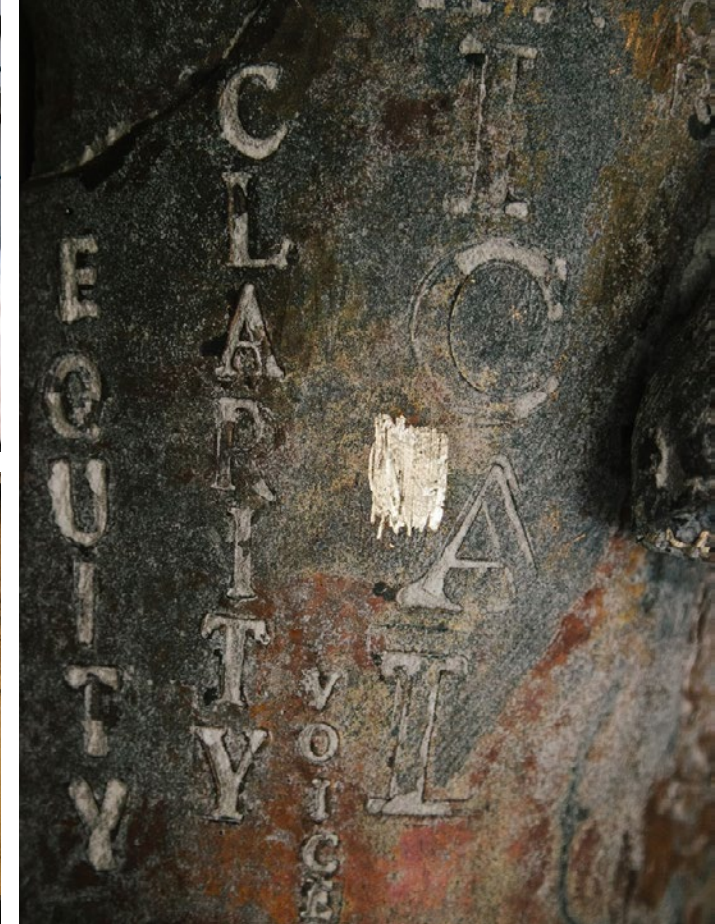
CAPITAL PROJECTS

The development, fabrication and installation of civic artwork is an integrative process which emphasizes thoughtful coordination with the community, design team members (architects, engineers, landscape architects) and authorizers to ensure high-quality, low-maintenance art. Permanent civic art projects generally take two to five years from inception to completion. For additional information on completed and active projects, please visit lacountyarts.org/civcart.





HALL OF JUSTICE



About *EMBODIED*

Breaking from the tradition of Baroque-style architecture, the Hall of Justice's design was ahead of its time when it was erected in 1926. The Hall was repurposed in 2014 to become the headquarters for the Los Angeles County Sheriff's Department and the Los Angeles County District Attorney's Office. The sculpture *Embodied*, by artist Alison Saar, stands as an iconic, timeless and reassuring artwork for the Hall of Justice and what it represents: justice, fairness, law, order, integrity and resolve.

- The one ton figure's dress features over 200 words in more than a dozen languages that were hand-stamped into the clay model. The words were gathered through public conversation with staff from both the Sheriff's Department and the District Attorney's Office as well as from local schools, courthouses and Grand Park
- All work was completed within Los Angeles County providing local employment to over 30 arts professionals
- 12-inch clay sculpture was enlarged 10 times to create a full-scale model
- Model carved out of more than 500 cubic feet of foam and covered in nearly 100 pounds of clay
- Hand molded clay model was divided into more than 35 sections for fiberglass and silicone rubber molds that were made for wax casting



A Piece of Living History

District Attorney Jackie Lacey

The Hall of Justice isn't just a structure. You are walking into a place where important decisions are being made that affect the lives of others — it is a piece of living history.

The prosecutors who work here battle elder abuse, violent crime, child abuse, hard-core gangs, fraud and a host of other crimes. The Hall of Justice is the main hub of District Attorney's Office activities.

The civic artwork on the plaza level serves as a welcoming and reaffirming statement of the administration of justice. The artwork is a bronze sculpture of a woman — but not the traditional lady of justice holding scales with a blindfold over her eyes. She stands proudly with her eyes open and gazes upon the visitors as they enter the Hall of Justice. An open book held in one hand extends toward her feet and symbolizes her being rooted in the rule of law. A dove perches in her other hand, stretching up toward the sky, symbolizing her setting free the spirit of the law.

Etched in her skirt are more than 200 words associated with justice. Her long hair is braided, symbolizing inner strength and wisdom. The sculpture, *Embodied*, adds significantly to the majesty of this Hall of Justice.





ZEV YAROSLAVSKY FAMILY SUPPORT CENTER

Named one of the best public artworks in the US by Americans for the Arts Public Art Network Year in Review



A new model for LA County, the Zev Yaroslavsky Family Support Center is a multi-agency prototype facility. Through seamless delivery of health and human services, it improves the well-being of children and families, by ensuring good physical health, safety and survival, economic stability, education and workforce readiness. The Center provides essential assessments, services and referrals linked to a range of County and community resources that are family-focused, culturally sensitive, responsive and accessible.

The facility and its art collection is one of the largest capital projects in the Third District of Los Angeles County. The artworks at this new campus are intended to foster a sense of community and humanity.



Creating a New Model for Clients and Employees

Maria Chong-Castillo,
Third District Deputy for Public Works

Ted Shepard,
Department of Public Works Project Manager

It's a striking building by any measure. Set in a park-like campus, it stands five stories tall, with 12-foot limestone columns. Sunlight streams through floor-to-ceiling windows. Inside and out, vibrant images and abstract designs brighten the view. Maria Chong-Castillo emphasizes that the Center's art, like every element of its design, was chosen with two groups of people in mind: constituents and staff. "Social service is a really difficult job," she acknowledges. "It's difficult for our constituency, and it's very stressful for our employees."

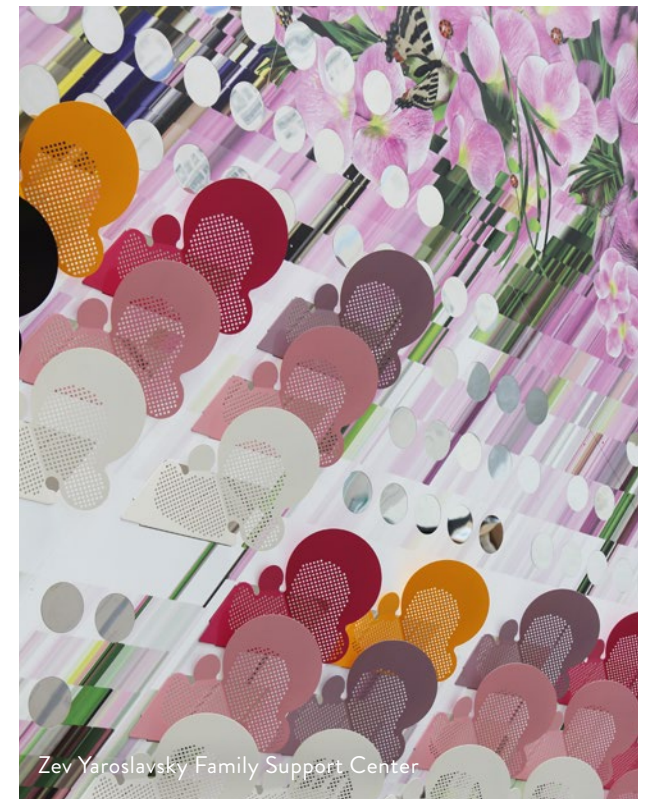
Lynn Criswell's *Future Memories* places dreamily playful images of childhood on two porcelain enameled collages that hang in the building's lunchroom areas. The work is spirited yet calming, as are Elena Manferdini's contributions, which consist of art glass, patterned floor tiles and an exuberantly colorful lobby piece, *Inverted Landscapes*. Though its images of flowers and butterflies seem to float overhead, the three-dimensional collage of digitally printed metal panels, which measures 12 feet by 44 feet, was a hefty piece of the Center's puzzle.

During construction, Ted Shepard helped to ensure that the structure's integrated artwork was installed without interrupting the progress of the building. Such precise timing was especially crucial for Manferdini's *Inverted Landscapes*.

"It actually had a structural component to it, and it had to fit in the schedule in between the ceiling and

the lighting," Shepard says. "The artist had some structural steelwork of her own to do." Shepard credits "constant communication," along with cooperation and compromise, for the success of the \$175.9 million building, which came in on time and under budget. Balancing the needs and input of the tenant departments along with Public Works, the Arts Commission, the artists, contractors, builders and a long list of consultants required a significant coordination effort, Shepard says, but for him the Center is a "dream project," and one that he hopes will inspire future designs.

In the meantime, it seems to be inspiring the people for whom it was created. Chong-Castillo has received overwhelmingly positive feedback since the Center began to fulfill its innovative mission. "It's not just to serve the clients," she says. "It is also to serve the staff."



COMPLETED PROJECTS IN 2015-16

Projects listed alphabetically



Capitol Display

California State Capitol Building
1303 10th St., Sacramento, CA 95814
All Districts
Public Information Office
Project Cost: \$18,350
Funding Source: Public Information Office
Artist: Louise Griffin
Artwork Title: *Untitled*



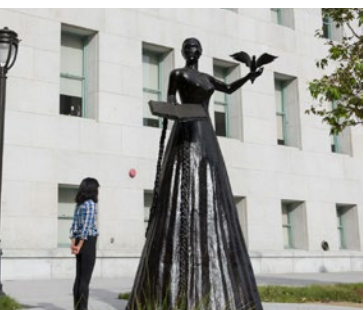
Coroner Biological Annex

1104A N. Mission Rd., Los Angeles, CA 90033
First District
Department of Medical Examiner - Coroner
Project Cost: \$164,978
Funding Source: Civic Art Funds
Artist: Erin Shie Palmer
Artwork Title: *Pentimento*



Downtown Mental Health Center

529 S. Maple Ave., Los Angeles, CA 90013
Second District
Department of Mental Health
Project Cost: \$76,353
Funding Source: Civic Art Funds
Artists: Rebecca Niederlander and Iris Anna Regn
Artwork Title: *Mending II*



Hall of Justice Repair and Reuse

211 W. Temple St., Los Angeles, CA 90012
First District
Department of Public Works
Project Cost: \$925,096
Funding Source: Civic Art Funds
Artist: Alison Saar
Artwork Title: *Embodied*



Mental Health Urgent Care

6060 N. Paramount Blvd., Long Beach, CA 90805
Second District
Department of Mental Health
Project Cost: \$39,975
Funding Source: Civic Art Funds
Artist: Wenceslao Quiroz
Artwork Title: *Transformative Illumination*



San Angelo Multi-Purpose Center

245 S. San Angelo Ave., La Puente, CA 91746
First District
Department of Parks and Recreation
Project Cost: \$43,684
Funding Source: Civic Art Funds
Artist: Mara Lonner
Artwork Title: *San Angelo Landscape*



Zev Yaroslavsky Family Support Center

7515 Van Nuys Blvd., Van Nuys, CA 91405
Third District
Department of Public Works
Project Cost: \$852,148
Funding Source: Civic Art Funds
Artists: Elena Manferdini, Lynn Criswell
Artwork Title: *Inverted Landscapes, Future Memories*



Fire Station 143

ACTIVE PROJECTS

Projects listed alphabetically

Artesia Library

18801 Elaine Ave., Artesia, CA 90701
 Fourth District
 Public Library
 Budget: \$61,000
 Funding Source: Civic Art Funds
 Artist: Sonia Romero
 Status: Design

Castaic Animal Care Center

31044 N. Charlie Canyon Rd., Castaic, CA 91384
 Fifth District
 Department of Animal Care and Control
 Budget: \$30,000
 Funding Source: Civic Art Funds
 Artists: Lauren Evans & Margaret Lazzari
 Status: Fabrication

Division 3 Fire Headquarters

19190 Golden Valley Rd., Santa Clarita, CA 91387
 Fifth District
 Fire Department
 Budget: \$100,000
 Funding Source: Civic Art Funds
 Artist: TBD
 Status: Planning

Downtown Mental Health Center, Phase 2

529 S. Maple Ave., Los Angeles, CA 90013
 Second District
 Department of Mental Health
 Budget: \$15,000
 Funding Source: Civic Art Funds
 Artist: Aly Kourouma
 Status: Planning

Eugene C. Biscailuz Regional Training Center

1060 N. Eastern Ave., Los Angeles, CA 90063
 First District
 Sheriff's Department
 Budget: \$138,000
 Funding Source: Civic Art Funds
 Artist: James Dinh
 Status: Design

Fire Station 143

28605 Halsey Canyon Rd., Castaic, CA 91384
 Fifth District
 Fire Department
 Budget: \$70,000
 Funding Source: Civic Art Funds
 Artist: Kipp Kobayashi
 Status: Design

Hall of Justice Repair and Reuse, Phase 2

211 W. Temple St., Los Angeles, CA 90012
 First District
 Department of Public Works
 Budget: \$70,000
 Funding Source: Civic Art Funds
 Artist: TBD
 Status: Planning

Harbor UCLA Psychiatric Emergency Service Expansion

1000 W. Carson St., Torrance, CA 90502
 Second District
 Department of Health Services
 Budget: \$46,000
 Funding Source: Civic Art Funds
 Artist: TBD
 Status: Artist Selection



Rancho Los Amigos National Rehabilitation Center

Los Nietos Library

8533 Duchess Dr., Whittier, CA 90606
Fourth District
Public Library
Budget: \$34,000
Funding Source: Civic Art Funds
Artist: Louise Griffin
Status: Design

Manhattan Beach Library

1320 Highland Ave., Manhattan Beach, CA 90266
Fourth District
Public Library
Budget: \$364,000
Funding Source: Civic Art Funds, City of Manhattan Beach, Public Library
Artist: Kathy Taslitz
Status: Fabrication

Martin Luther King, Jr. East Parking Structure

12021 South Wilmington Ave., Los Angeles, CA 90059
Second District
Department of Health Services
Budget: \$340,000
Funding Source: Civic Art Funds
Artist: TBD
Status: Artist Selection

Martin Luther King, Jr. Recuperative Care Center

1680 E. 120th St., Los Angeles, CA 90059
Second District
Department of Health Services
Budget: \$34,000
Funding Source: Civic Art Funds
Artist: Sandy Rodriguez
Status: Design

Mid-Valley Comprehensive Medical Center

7515 Van Nuys Blvd., Van Nuys, CA 91405
Third District
Department of Health Services
Budget: \$19,000
Funding Source: Civic Art Funds
Artist: TBD
Status: Scoping

Norwalk Golf Center

13717 Shoemaker Ave., Norwalk, CA 90650
Fourth District
Department of Parks and Recreation
Budget: \$123,000
Funding Source: Civic Art Funds
Artist: TBD
Status: Proposal

Olive View-UCLA Medical Center

14445 Olive View Dr., Sylmar, CA 91342
Fifth District
Department of Health Services
Budget: \$32,000
Funding Source: Civic Art Funds
Artist: TBD
Status: Artist Selection

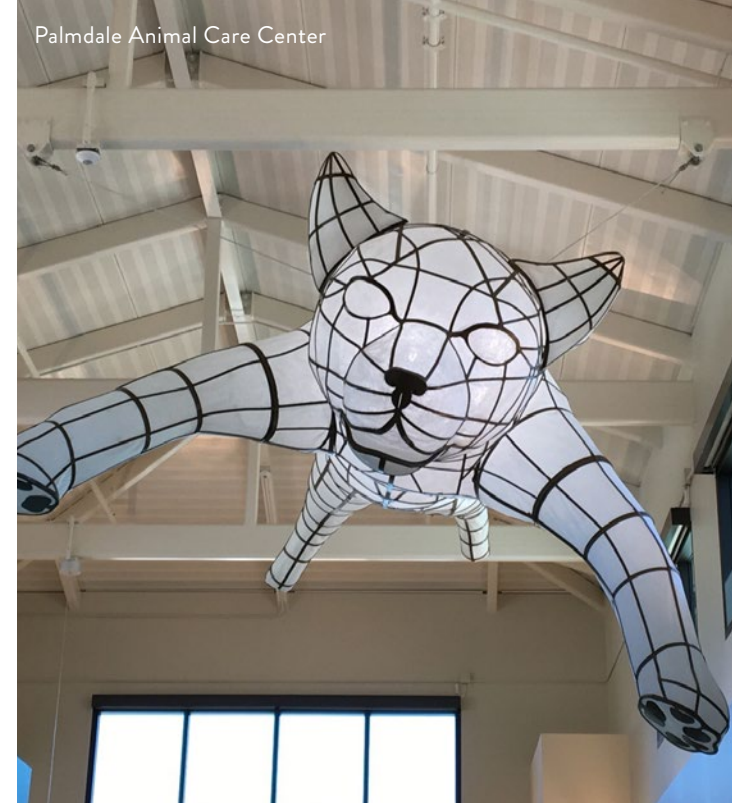
Palmdale Animal Care Center

38500 Sierra Hwy., Palmdale, CA 93550
Fifth District
Department of Animal Care and Control
Budget: \$150,000
Funding Source: Civic Art Funds
Artist: Mark Lere
Status: Fabrication

Rancho Los Amigos National Rehabilitation Center

7601 E. Imperial Hwy., Downey, CA 90242
Fourth District
Department of Health Services
Budget: \$1,000,000
Funding Source: Civic Art Funds
Artist: The de la Torre Brothers
Status: Fabrication

Palmdale Animal Care Center



Martin Luther King, Jr. East Parking Structure Rendering





Slauson Streetscape Improvements

Slauson Avenue, Los Angeles, CA 90056
Second District
Department of Public Works
Budget: \$43,000
Funding Source: Civic Art Funds
Artist: Sussman/Prejza & Co.
Status: Design

South Whittier Library

14433 Leffingwell Rd., Whittier, CA 90604
Fourth District
Public Library
Budget: \$96,000
Funding Source: Civic Art Funds
Artist: Louise Griffin
Status: Design

Stoneview Nature Center

5950 Stoneview Dr., Culver City, CA 90232
Second District
Department of Parks and Recreation
Budget: \$70,000
Funding Source: Civic Art Funds
Artist: Fallen Fruit
Status: Design

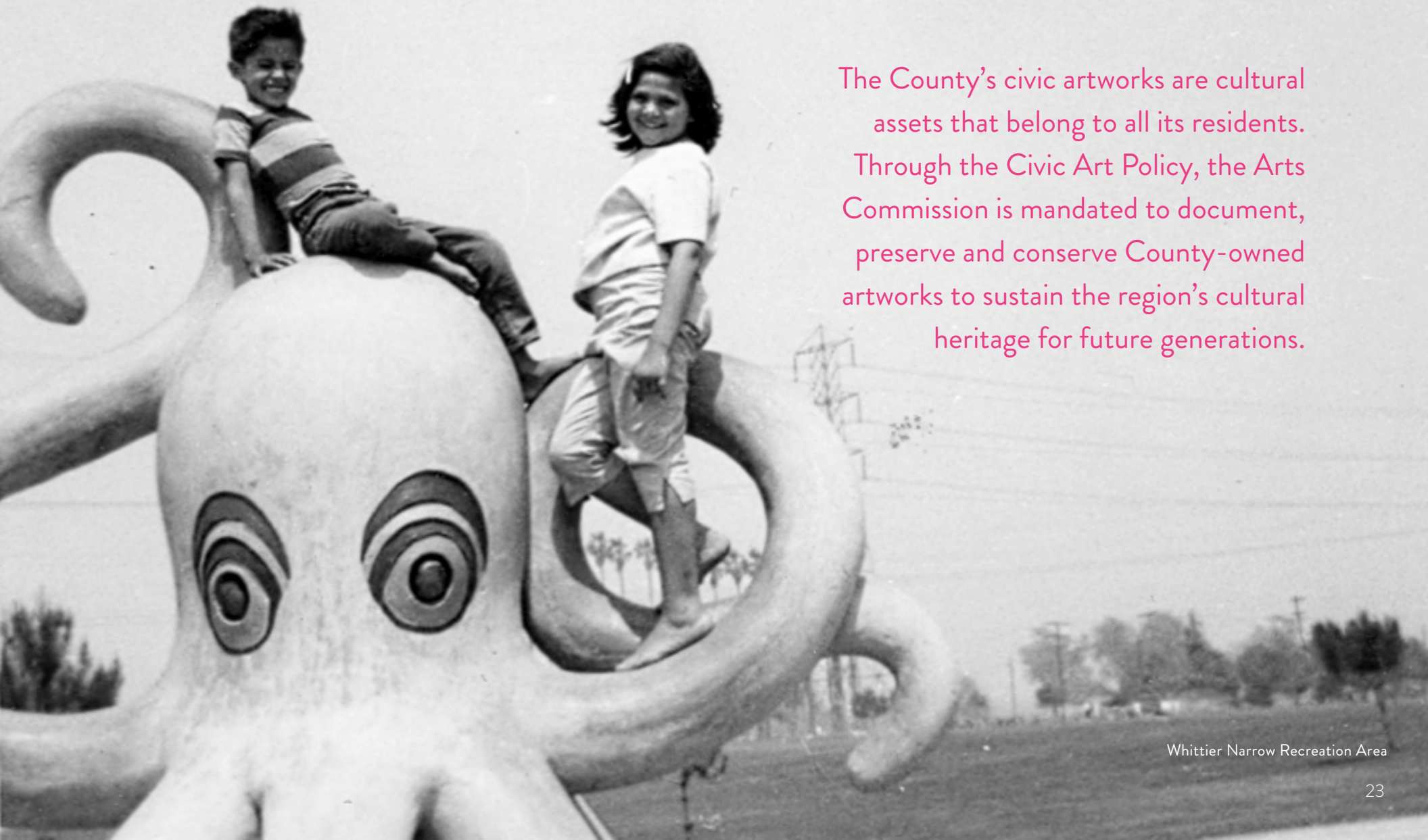
Zev Yaroslavsky Family Support Center, Phase 2

7515 Van Nuys Blvd., Van Nuys, CA 91405
Third District
Department of Public Works
Budget: \$117,000
Funding Source: Civic Art Funds
Artist: TBD
Status: Scoping

COUNTY COLLECTION

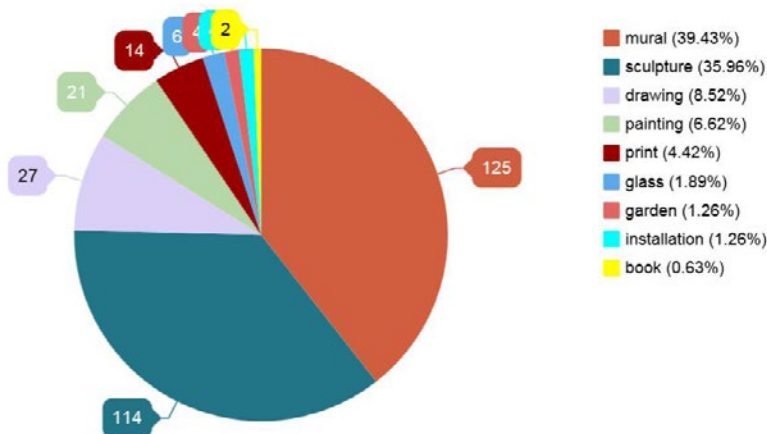
ART ASSET MANAGEMENT | Your County, Your Art

The County's civic artworks are cultural assets that belong to all its residents. Through the Civic Art Policy, the Arts Commission is mandated to document, preserve and conserve County-owned artworks to sustain the region's cultural heritage for future generations.

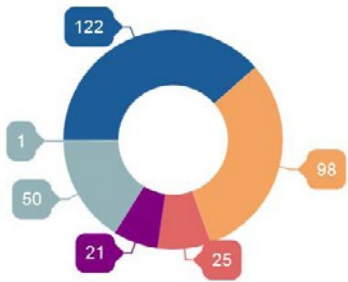


317 ARTWORKS IN THE CIVIC ART COLLECTION

Artwork Types

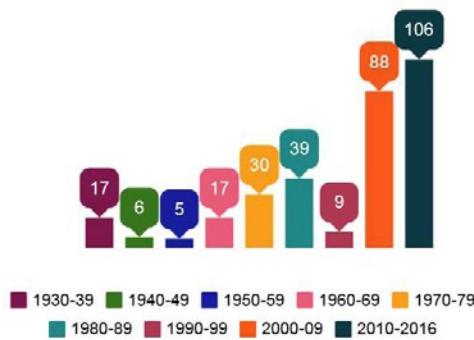


Artworks by District



1 (38.49%) 2 (30.91%) 3 (7.89%) 4 (6.62%)
5 (15.77%) Out of LA County (0.32%)

Creation Date



Civic Art staff coordinates with County departments in the management of County-owned art. Work includes project forecasting and budgeting, art condition assessments, ongoing preventive maintenance and the facilitation of accepting donations of art to the County. Additionally, the Arts Commission manages County-owned historic artworks that were created before the Civic Art Program was established and which need conservation because of their age.

Civic art can be found throughout the 4,084-square-mile expanse of the County. County staff and the public can learn about the existing civic art collection on the Arts Commission website.

http://www.lacountyarts.org/civkart_countyscollection.htm



Whittier Narrows Recreation Area: Benjamin Dominguez Play Sculptures Conservation

Surrounding Legg Lake in Whittier Narrows Recreation Area are six fantastical aquatic-themed cast concrete sculptures designed by Mexican-American artist, Benjamin Dominguez (1894-1974). These sculptures represent a movement in the early 1960s of modern parks being seen as museums where the public could enjoy arts and crafts of the community. Children were invited to actively participate in the sculptures' whimsical and non-prescribed designs, allowing children to use their imaginations as they play. Consequently, the sculptures exhibited years of active use, and their paint and concrete had become worn. Yet vandalism has always been minimal, demonstrating that these artworks are revered by park users. The Department of Parks and Recreation secured funding to restore the play sculptures. The work included lead abatement, restoration by a conservator and interpretative signage.

Benjamin Dominguez secured work in the United States by writing letters in Spanish to Parks and Recreation Departments and then translating them using a Spanish-English dictionary. Frank Bonelli, a Los Angeles County Supervisor, answered one of those letters in 1960. Soon after, Dominguez signed a contract to begin creating play sculptures near Legg Lake at Whittier Narrows Recreation Area. Decades later, the sea creatures are still being enjoyed by park visitors. The Legg Lake sculptures were Dominguez's first commission in California and are the last remaining examples of his early work. The Friends of La Laguna, a nonprofit organization dedicated to preserving the artworks of Benjamin Dominguez, successfully nominated the Legg Lake sculptures to the California Historic Register in 2012. In 2016 a restoration of the sculptures was completed.



A Playful Nod to the Past, with an Eye on the Future

The Octopus is wide-eyed, and both noggins on the Two-Headed Dragon beam with a ferociously friendly smile. At Legg Lake in Whittier Narrows Regional Park, these unlikely residents of the San Gabriel Valley have been charming kids since 1960, when artist Benjamin Dominguez handcrafted them and four other play sculptures from steel mesh and concrete. They were designed to invite climbing, and that's just what they've done, making them a beloved success. But generations of clambering limbs left the whimsical creatures the worse for wear.

Conservator Donna Williams was determined to honor the past while looking toward the future. Beyond the pieces' historic and artistic value, there was the matter of their hands-on, day-to-day use and the need to ensure that families could enjoy them for many years to come. But first, there was the matter of lead paint in three of the six figures. "Conservators run into lead paint all the time," says Williams, whose Williams Art Conservation has worked with the County on other projects including The Helmsman, a statue that overlooks Marina del Rey Harbor.

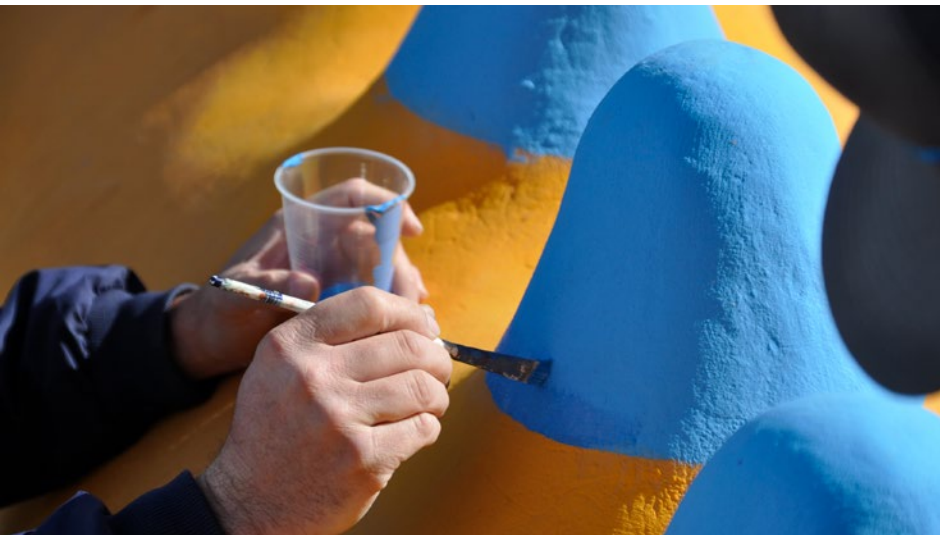
For the Dominguez sculptures, she partnered with a firm licensed in the health and safety protocols of lead abatement.

The two teams worked in tandem, on site. Once a piece was stripped of paint — more than 10 layers in some areas, according to Williams — the new colors were applied.

To bring the sea-themed collection back to life, Williams chose mineral-based paints that bond to the masonry and whose colors don't fade. "Twenty years from now, that orange that's on Mother Dragon" — the first piece Dominguez made for the site — "will be as orange as it is now. It might get dirty, but it won't fade." This will simplify maintenance and touchups, a key consideration in Williams' strategy.

With playful touches and personality, it's no wonder that the Whittier Narrows sculptures have proved enchanting for more than half a century. Because they've been an indelible part of people's lives, some people were alarmed when they saw work fences go up around the sculptures. Williams recalls that they "were a little agitated, like, 'You're not going to tear these down, are you?'"

For the most part, though, she remembers people's delight. "We had many people come up to us and say that they were excited to see that they were being restored, that they had played on them as children, and that they brought their grandchildren to play on them." Mother Dragon and her concrete companions are brightly spiffed up and ready for many more years of action.



CONSERVATION PROJECTS

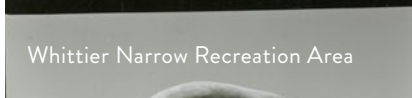
Firestone Area Probation Office Cesar Chavez Mural Restoration

8526 Grape St., Los Angeles, CA 90001
 Second District
 Probation Department
 Project Cost: \$13,616
 Funding Source: Probation Department
 Status: Completed



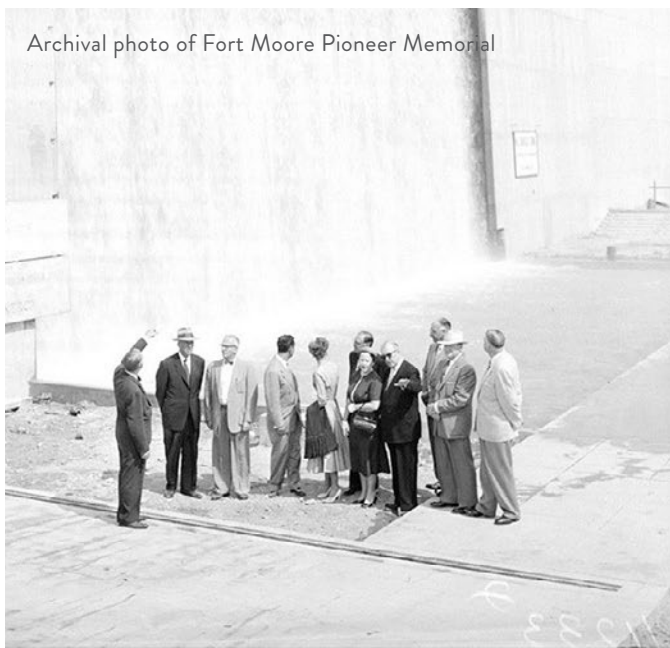
Fort Moore Pioneer Memorial Restoration

N. Hill Street, Los Angeles, CA 90012
 First District
 Department of Public Works
 Budget: \$120,000
 Funding Source: Civic Art Funds
 Status: Design



Masao W. Satow Library Conservation

14433 Crenshaw Blvd., Gardena, CA 90249
 Second District
 Public Library
 Project Cost: \$700
 Funding Source: Public Library
 Status: Completed



Archival photo of Fort Moore Pioneer Memorial



Fort Moore Pioneer Memorial

Whittier Narrows Recreation Area: Benjamin Dominguez Play Sculptures Conservation

750 Santa Anita Ave., South El Monte, CA 91733
 First District
 Department of Parks and Recreation
 Project Cost: \$163,000
 Funding Source: Proposition A Grant, Measure U EPS
 Status: Completed

Artist Unknown, *Untitled (Black Form Against White Sky with Orange Sun)*



Harvey Johnson, *Untitled (After John Biggers)*



Paul R. Williams, *Golden State Mutual Life Insurance*



DONATIONS & ACQUISITIONS

Golden State Mutual Collection

In November, 2015, Los Angeles County acquired 123 artworks that were originally part of the Golden State Mutual Life Insurance art collection. The Golden State Mutual Life Insurance Company was once the largest African American-owned business in the West. William Nickerson, Jr. started the company after he moved to Los Angeles in the 1920s and discovered that many Black residents in the city could not obtain life insurance policies. The company amassed one of the largest collections of African American art in the United States. William Pajaud, who worked in the public relations division, founded the collection.

An established artist himself, he became the curator of the collection and oversaw its growth over 22 years, collecting more than 200 artworks by well-known artists such as Richmond Barthé, Hale Woodruff, Charles Alston, Varnette P. Honeywood, Charles White, Betye Saar, David Hammons and Willie Middlebrook. In 2007 the

company went out of business and was forced to sell the art collection to cover debts. Second District Supervisor Mark Ridley-Thomas heard about pieces from the art collection being sold off throughout the United States. He felt strongly that the remainder of the collection should stay intact and in Los Angeles County. He wanted to make this important collection more accessible and known to the citizens of Los Angeles County. The Arts Commission is working with the Second Supervisorial District Office to plan exhibitions of the collection. The first will be an exhibition of artworks in the newly renovated AC Bilbrew Library opening in 2017.

DONATIONS & ACQUISITIONS

Art of Elysium

LAC+USC Medical Center

2051 Marengo St., Los Angeles, CA 90033

First District

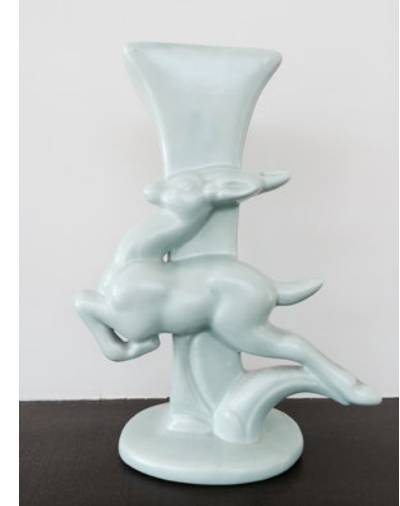
Department of Health Services

Donation

Artist: Gregory Siff

Arwork Title: *Around the Heart and Through the Soul*, 2015

Status: Close-out



Golden State Mutual Art Collection

Second District

Budget: \$110,000

Funding Source: Second District Board Office

Acquisition

123 Artworks, Multiple Artists

Status: Scoping



Metlox Pottery

Manhattan Beach Library

1320 Highland Ave, Manhattan Beach, CA 90266

Fourth District

Public Library

Donation

Artist: Carl Romanelli

Arwork Title: *Poppytrail Vases and Figurines* c 1940s

Status: Completed

Metlox Pottery Donation at the Manhattan Beach Library



CIVIC ART INVENTORY

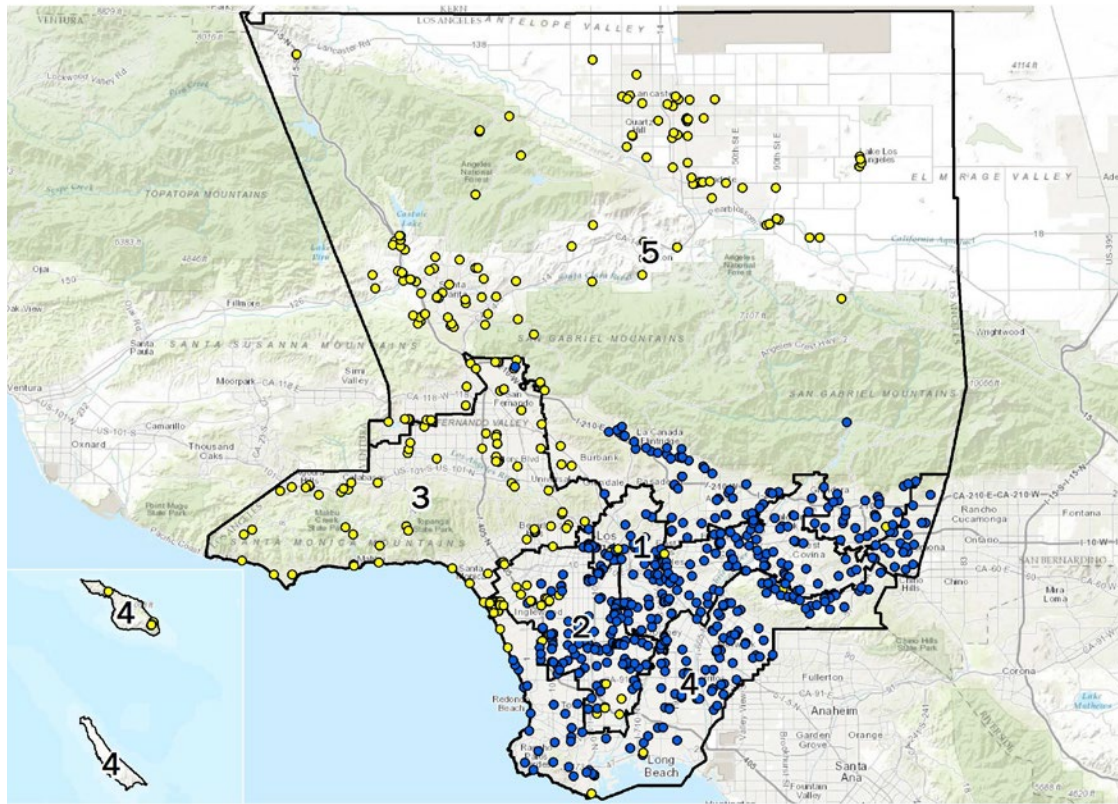
Baseline Inventory

The Arts Commission is responsible for the management of the County’s civic art collection. The Civic Art Policy mandates updating and maintaining the County civic art inventory and making it accessible to County staff and the public through a report every five years.

The first inventory was done in 2009 and focused on sculptures and murals. Arts Commission staff found 68 artworks that met the civic art accession criteria. These works were accessioned into the County’s civic art collection after ownership was established.

In April 2015, Arts Commission staff embarked on a second iteration of the inventory to establish a baseline of County-owned civic art assets. The scope of the current inventory includes portable works, such as paintings,

drawings, photographs and limited edition prints, and covers more than 900 County sites — many of which have never interfaced directly with the Arts Commission before. While conducting these site visits, Arts Commission staff updates condition reports on artworks already in the County’s civic art collection for future maintenance purposes.



Inventory Sites □ LA County Board of Supervisor District ● Not Yet Visited ● Visited

Map sources: ESRI, LA County Department of Public Works (2011)

572 COUNTY SITES VISITED

8700 MILES DRIVEN ACROSS LOS ANGELES COUNTY

1.3 MILLION STEPS WALKED
OWNED AND LEASED FACILITIES

300 NEW COUNTY CONTACTS MADE

1314 NEW ARTWORKS FOUND

147 ARTWORKS EVALUATED FOR
MAINTENANCE PURPOSES

Once the civic art inventory is complete, staff will begin to implement the following steps:

- Label artworks so they are identifiable as County owned
- Create and distribute to each County department a set of art asset inventory lists that address the following:
 - Maintenance guidelines for each type of artwork
 - Prioritization of artworks by maintenance needs for budget forecasts, with artworks requiring conservation immediately or imminently clearly flagged
 - Identification of artworks that need secure installation or must be relocated for preservation purposes



In Search of County Treasures

It was a perfect early spring morning to explore Descanso Gardens. The botanical garden's tulips, lilacs and cherry blossoms were in spectacular bloom. Like many of that day's visitors, Bridget Campos brought equipment with her. But rather than a tripod and camera or an easel and paints, her tools of the trade included an iPad, tape measure, binoculars and gloves.

While Campos could appreciate the park's natural beauty like other guests, her eyes were peeled for man-made rather than botanical gems. Her role as the Field Registrar for the civic art inventory requires that she visit more than 900 sites across LA County over a two-year span to catalog previously unregistered civic artworks. The sites range from small administrative offices to the seat of County government, the Kenneth Hahn Hall of Administration, whose square footage is greater than that of ten football fields. What some might view as a daunting challenge she welcomes as a thrilling opportunity. "I never know what I'm going to find," she says, "so it's always exciting."

Zeroing in on potentially significant, and possibly overlooked, works of civic art requires know-how, a spirited tenacity and patience. Part art hunter, part ambassador for the Arts Commission, Campos must navigate bureaucratic layers as well as physical geography. Though the Arts Commission has been around since 1947, in many cases Campos' visit to a County facility is its first direct contact with the agency.

"Most of the time, people are surprised to hear that the County has an Arts Commission," Campos says, adding that she enjoys being an emissary who shines a light on the agency's mandate to manage and care

for the County's civic art assets. "A lot of people are excited when they learn about the project," she says, recalling an especially delighted and helpful guide, Deputy Keith Holly, when she visited the Sheriff's Industry Station in the City of Industry.

At Descanso Gardens, Rachel Young, Director of Horticulture and Garden Operations, was attuned to Campos's mission, and aimed her electric cart "off road" to a circular arrangement of 33 stones in a forest clearing at the edge of the park: an artist's "sun spiral." Walking around the miniature Stonehenge, Campos got out her ruler to measure the rectangular stones, and took pictures from multiple angles on her ever-present iPad, which she refers to as "my lifeline."

Beyond her skill and efficiency, she possesses the curiosity to detect compelling possibilities in run-of-the-mill work spaces, the kind of "uninteresting" places that aren't usually associated with art. This tireless spirit of discovery and the physical stamina to conduct three to five site visits a day, five days a week, are integral components of the job. "It's my calling to do this," native Angeleno Campos says of her role in the civic art inventory. "I was very excited that they chose me."

This story is excerpted from the [Civic Art Baseline Inventory blog](#), "Public + Art".

For more stories, please visit:
<https://lacountyarts.org/publicplusart>

INVENTORY HIGHLIGHTS

These artworks represent the highlights of inventory findings for sites surveyed during Fiscal Year 2015-16 that may be accessioned into the County civic art collection after provenance research verifies ownership. During this fiscal year, the First, Second and Fourth Supervisorial Districts were visited. Site visits conducted after June 30, 2016, will focus on the Third and Fifth Districts.



Oil Painting

Creation Date: Unknown
Eaton Canyon Natural Area and Nature Center
1750 N. Altadena Dr., Pasadena 91107
Fifth District
Department of Parks and Recreation



Ben Abril Painting

Creation Date: unknown
Kenneth Hahn Hall of Administration
500 W. Temple St., Los Angeles 90012
First District
Chief Executive Office



Bronze Sculpture

Creation Date: Unknown
San Dimas Sheriff Station
270 S. Walnut Ave., San Dimas 91773
Fifth District
Sheriff's Department



Ceramic Mural (Life of Eight-Deer-Ocelot-Clan)

Creation Date: 1978
Edward Roybal Comprehensive Health Center
245 S. Fetterly Ave., Los Angeles 90022
First District
Department of Health Services



Chicana Service Action Center Mural

Creation Date: 1979
East Los Angeles Area Probation Office
4849 E. Civic Center Way, Los Angeles 90022
First District
Department of Probation



Chinese Pioneers Memorial

Creation Date: September 2010
Los Angeles County Crematory
3301 E. First St., Los Angeles 90037
First District
Department of Health Services



Dorothy Kirby Chapel

Creation Date: Unknown
Dorothy Kirby Center
1500 S. McDonnell Ave., Commerce 90022
First District
Department of Probation



Mural

Creation Date: 1970-71
Metro East North District Office
2855 E. Olympic Blvd., Los Angeles 90023
First District
Department of Public Social Services

BOARD OF SUPERVISORS 2015-16

Hilda L. Solis
Mark Ridley-Thomas
Sheila Kuehl
Don Knabe
Michael D. Antonovich

COMMISSIONERS 2015-16

Bettina Korek
President

Pamela Bright-Moon
Vice President

Betty Haagen
Secretary

Helen Hernandez
Executive Committee

Claire Peeps
Immediate Past President

Laura Zucker
Executive Director

COMMISSIONERS 2015-16 *(Continued)*

Eric Hanks
Constance Jolcuvar
Peter Lesnik
Claudia Margolis
Kathryn McDonnell
Alis Clausen Odenthal
Norma Provencio Pichardo
Claire Peeps
David Valdez
Hope Warschaw
Rosalind Wyman

CIVIC ART COMMITTEE MEMBERS

Alis Clausen Odenthal
Civic Art Committee Chair

Pamela Bright-Moon
Immediate Past Chair

Constance Jolcuvar
Kathryn McDonnell
David Valdez
Hope Warschaw

CIVIC ART PROGRAM STAFF

Grace Ramirez-Gaston
Civic Art Director

Pauline Kanako Kamiyama
Interim Director, Senior Project Manager

Clare Haggarty
Collections Manager

Mayen Alcantara
Project Manager

Jennifer Lieu
Project Manager

Erik Qvale
Project Manager

Yvonne Lee
Registrar

Bridget Campos
Field Registrar

Lida Venieri
Program Coordinator

Contributors also include Margaret Bruning, former Civic Art Director, Erin Harkey, former Senior Project Manager, Dave Hunt, former Project Manager and Jen Huang, former Program Coordinator.



INDEX – CIVIC ART PROJECTS LISTED BY DISTRICT

FIRST DISTRICT PROJECTS

Art of Elysium

LAC+USC Medical Center

2051 Marengo St., Los Angeles, CA 90033

First District

Department of Health Services

Donation

Artist: Gregory Siff

Status: Completed

Coroner Biological Annex

1104A N. Mission Rd., Los Angeles, CA 90033

First District

Department of Medical Examiner - Coroner

Project Cost: \$164,978

Funding Source: Civic Art Funds

Artist: Erin Shie Palmer

Status: Completed

Eugene C. Biscauilz Regional Training Center

1060 N. Eastern Ave., Los Angeles, CA 90063

First District

Sheriff's Department

Budget: \$138,000

Funding Source: Civic Art Funds

Artist: James Dinh

Status: Design

Fort Moore Pioneer Memorial Restoration

541 North Hill St., Los Angeles, CA 90012

First District

Department of Public Works

Budget: \$120,000

Funding Source: Civic Art Funds

Status: Design

Hall of Justice Repair and Reuse

211 W. Temple St., Los Angeles, CA 90012

First District

Department of Public Works

Project Cost: \$925,096

Funding Source: Civic Art Funds

Artist: Alison Saar

Status: Completed

Hall of Justice Repair and Reuse, Phase 2

211 W. Temple St., Los Angeles, CA 90012

First District

Department of Public Works

Budget: \$70,000

Funding Source: Civic Art Funds

Artist: TBD

Status: Design

San Angelo Multi-Purpose Center

245 S. San Angelo Ave., La Puente, CA 91746

First District

Department of Parks and Recreation

Project Cost: \$43,684

Funding Source: Civic Art Funds

Artist: Mara Lonner

Status: Completed

Whittier Narrows Recreation Area: Benjamin Dominguez Play Sculptures Conservation

750 Santa Anita Ave., South El Monte, CA 91733

First District

Department of Parks and Recreation

Project Cost: \$163,000

Funding Source: Proposition A Grant, Measure U EPS

Status: Completed

SECOND DISTRICT PROJECTS

Creative Graffiti Abatement Program

Various locations, Los Angeles, CA
Second District
Department of Parks and Recreation
Budget: \$305,000
Funding Source: Open Space District Grant, Civic Art Funds
Status: Fabrication

Downtown Mental Health Center

529 S. Maple Ave., Los Angeles, CA 90013
Second District
Department of Mental Health
Project Cost: \$76,353
Funding Source: Civic Art Funds
Artist: Rebecca Niederlander and Iris Anna Regn
Status: Completed

Downtown Mental Health Center, Phase 2

529 S. Maple Ave., Los Angeles, CA 90013
Second District
Department of Mental Health
Budget: \$15,000
Funding Source: Civic Art Funds
Artist: Aly Kourouma
Status: Planning

Firestone Area Probation Office Cesar Chavez Mural Restoration

8526 Grape St., Los Angeles, CA 90001
Second District
Department of Probation
Project Cost: \$13,616
Funding Source: Probation Department
Status: Completed

Golden State Mutual Art Collection

Second District
Budget: \$110,000
Funding Source: Second District Board Office
Status: Scoping

Harbor UCLA Psychiatric Emergency Service Expansion

1000 W. Carson St., Torrance, CA 90502
Second District
Department of Health Services
Budget: \$46,000
Funding Source: Civic Art Funds
Artist: TBD
Status: Planning

Martin Luther King, Jr. East Parking Structure

12021 South Wilmington Ave., Los Angeles, CA 90059
Second District
Department of Health Services
Budget: \$340,000
Funding Source: Civic Art Funds
Artist: TBD
Status: Artist Selection

Martin Luther King, Jr. Recuperative Care Center

1680 E. 120th St., Los Angeles, CA 90059
Second District
Department of Health Services
Budget: \$34,000
Funding Source: Civic Art Funds
Artist: Sandy Rodriguez
Status: Design

Masao W. Satow Library Conservation

14433 Crenshaw Blvd., Gardena, CA 90249
Second District
Public Library
Project Cost: \$700
Funding Source: Public Library
Status: Completed

Mayme Clayton Library and Museum Consulting

4130 Overland Ave. Culver City, CA 90230
Second District
Budget: \$49,000
Funding Source: Second District Board Office

Mental Health Urgent Care

6060 N. Paramount Blvd., Long Beach, CA 90805
Second District
Department of Mental Health
Project Cost: \$39,975
Funding Source: Civic Art Funds
Artist: Wenceslao Quiroz
Status: Completed

Some Place Chronicles

Various Locations, Los Angeles, CA
Second District
Budget: \$280,000
Funding Source: Utility User Tax
Status: Fabrication

Slauson Streetscape Improvements

Slauson Avenue, Los Angeles, CA 90056
Second District
Department of Public Works
Budget: \$43,000
Funding Source: Civic Art Funds
Artist: Sussman/Prejza & Co.
Status: Design

Stoneview Nature Center

5950 Stoneview Dr., Culver City, CA 90232
Second District
Department of Parks and Recreation
Budget: \$70,000
Funding Source: Civic Art Funds
Artist: Fallen Fruit
Status: Design

THIRD DISTRICT PROJECTS

Camp Ground: Arts, Corrections and Fire Management in the Santa Monica Mountains (CAMP)

1250 Encinal Canyon Rd., Malibu CA 90265
Third District
Fire Department
Budget: \$40,000
Funding Source: National Endowment for the Arts Grant
Artist: TBD
Status: Planning

Camp Vernon Kilpatrick Replacement Center

427 S. Encinal Canyon Rd., Malibu, CA 90265
Third District
Probation Department
Budget: \$340,000
Funding Source: Civic Art Funds
Status: Planning

Mid-Valley Comprehensive Medical Center

7515 Van Nuys Blvd., Van Nuys, CA 91405
Third District
Department of Health Services
Budget: \$19,000
Funding Source: Civic Art Funds
Artist: TBD
Status: Scoping

Zev Yaroslavsky Family Support Center

7515 Van Nuys Blvd., Van Nuys, CA 91405
Third District
Department of Public Works
Project Cost: \$852,148
Funding Source: Civic Art Funds
Artists: Elena Manferdini, Lynn Criswell
Status: Completed

Zev Yaroslavsky Family Support Center, Phase 2

7515 Van Nuys Blvd., Van Nuys, CA 91405
Third District
Department of Public Works
Budget: \$117,000
Funding Source: Civic Art Funds
Artist: TBD
Status: Scoping

FOURTH DISTRICT PROJECTS

Artesia Library

18801 Elaine Ave., Artesia, CA 90701
Fourth District
Public Library
Budget: \$61,000
Funding Source: Civic Art Funds
Artist: Sonia Romero
Status: Design

Los Nietos Library

8533 Duchess Dr., Whittier, CA 90606
Fourth District
Public Library
Budget: \$34,000
Funding Source: Civic Art Funds
Artist: Louise Griffin
Status: Design

Manhattan Beach Library

1320 Highland Ave., Manhattan Beach, CA 90266
Fourth District
Public Library
Budget: \$364,000
Funding Source: Civic Art Funds, City of Manhattan Beach, Public Library
Artist: Kathy Taslitz
Status: Fabrication

Norwalk Golf Center

13717 Shoemaker Ave, Norwalk, CA 90650
Fourth District
Department of Parks and Recreation
Budget: \$123,000
Funding Source: Civic Art Funds
Artist: TBD
Status: Proposal

Rancho Los Amigos National Rehabilitation Center

7601 E. Imperial Hwy., Downey, CA 90242
Fourth District
Department of Health Services
Budget: \$1,000,000
Funding Source: Civic Art Funds
Artist: The de la Torre Brothers
Status: Fabrication

South Whittier Library

14433 Leffingwell Rd., Whittier, CA 90604
Fourth District
Public Library
Budget: \$96,000
Funding Source: Civic Art Funds
Artist: Louise Griffin
Status: Design

Metlox Pottery

Manhattan Beach Library

1320 Highland Ave, Manhattan Beach, CA 90266
Fourth District
Public Library
Donation
Artist: Carl Romanelli
Status: Completed

FIFTH DISTRICT PROJECTS

Antelope Valley Art Outpost

Various Locations, Antelope Valley, CA
Fifth District
Budget: \$220,000
Funding Source: National Endowment for the Arts Grant, California Arts Council Grant, Civic Art Funds
Status: Close-out

Castaic Animal Care Center

31044 N. Charlie Canyon Rd., Castaic, CA 91384
Fifth District
Department of Animal Care and Control
Budget: \$30,000
Funding Source: Civic Art Funds
Artists: Lauren Evans & Margaret Lazzari
Status: Fabrication

Division 3 Fire Headquarters

19190 Golden Valley Rd., Santa Clarita, CA 91387
Fifth District
Fire Department
Budget: \$100,000
Funding Source: Civic Art Funds
Artist: TBD
Status: Planning

Fire Station 143

28605 Halsey Canyon Rd., Castaic, CA 91384
Fifth District
Fire Department
Budget: \$70,000
Funding Source: Civic Art Funds
Artist: Kipp Kobayashi
Status: Design

Olive View-UCLA Medical Center

14445 Olive View Dr., Sylmar, CA 91342
Fifth District
Department of Health Services
Budget: \$32,000
Funding Source: Civic Art Funds
Artist: TBD
Status: Artist Selection

Palmdale Animal Care Center

38500 Sierra Hwy., Palmdale, CA 93550
Fifth District
Department of Animal Care and Control
Budget: \$150,000
Funding Source: Civic Art Funds
Artist: Mark Lere
Status: Fabrication

COUNTYWIDE PROJECTS

Capitol Display

California State Capitol Building
1303 10th St., Sacramento, CA 95814
All Districts
Public Information Office
Project Cost: \$18,350
Funding Source: Public Information Office
Artist: Louise Griffin
Status: Completed

Countywide Civic Art Baseline Inventory

Various Locations, Los Angeles, CA
All Districts
Budget: \$240,000
Funding Source: LA County General Fund
Status: Active

Interdepartmental Healthy Design Workgroup

Various Locations, Los Angeles, CA
All Districts
Department of Public Health
Budget: \$0
Status: Planning

Roadmap to a Sustainable Waste Management Future

Various Locations, Los Angeles, CA
All Districts
Department of Public Works
Budget: \$0
Status: Scoping

Each image featured in this report has been reproduced as full frame or detail. Unless indicated, all images are by the Los Angeles County Arts Commission.

You are free to share, to copy, distribute and transmit the work under the following conditions: You must attribute the work in the manner specified by the author or licensor (but not in a way that suggests that they endorse you or your use of the work). You may not use this work for commercial purposes. You may not alter, transform, or build upon this work.

Page 1: Elena Manferdini

Page 2: Izzy Schwartz

Page 3: Tom Clancey

Page 4: Izzy Schwartz

Page 5: Elena Manferdini

Page 6: The Future Collective

Page 7: Carmen Uriarte

Page 8: The Future Collective (Las Cafeteras)

Page 9: The Future Collective (Antelope Valley Outpost), Haruko Tanaka (Camp Ground), Harry Gamboa Jr. (Some Place Chronicles)

Page 10: Jenny Kane

Page 11: Courtesy of County of Los Angeles Department of Public Works 'Roadmap to a Sustainable Waste Management Future' Report

Page 12: PlaceWorks and the Department of Parks and Recreation

Page 13: P2S, Courtesy of County of Los Angeles Department of Public Works 'Roadmap to a Sustainable Waste Management Future' Report

Page 15: Courtesy of L.A. Louver, Tom Clancey

Page 16: Dustin Bath, Milton Matrinez, Tom Leeser

Page 17: Elena Manferdini

Page 18: Izzy Schwartz, Elena Manferdini

Page 20: Rob Ley (Martin Luther King, Jr. East Parking Structure)

Page 21: Izzy Schwartz (Capitol Display), Alison Saar (Hall of Justice Repair and Reuse), Mara Lonner (San Angelo Multi-Purpose Center), Elena Manferdini (Zev Yaroslavsky Family Support Center)

Page 23: Courtesy of the County of Los Angeles Department of Parks and Recreation

Page 25: Courtesy of the County of Los Angeles Department of Parks and Recreation, Williams Art Conservation

Page 26: Courtesy of the County of Los Angeles Department of Parks and Recreation

Page 27: Courtesy of the County of Los Angeles Department of Parks and Recreation (Whittier Narrow Recreation Area), Courtesy of the County of Los Angeles Chief Executive Office Photo Archive (Fort Moore Pioneer Memorial Restoration)

Page 32: Jonathan Numer

Page 34: Carmen Uriarte

Designed by Creative Core
Stories and copy editing by Sheri Linden